

INSTALLATION INSTRUCTIONS  
**MODEL 6220 LATCHING RELAY MODULE  
HEADLAMP DIPPING KIT**

<b>SPECIFICATIONS:</b>	<b>OPERATING VOLTAGE:</b>	<b>12 - 24 VDC</b>
	<b>MAXIMUM LOAD:</b>	<b>150-WATTS PER OUTPUT CHANNEL</b>
	<b>ENVIRONMENTAL:</b>	<b>CONFORMS TO SAE J2139 FOR VIBRATION, DUST, CORROSION, AND WATER SPRAY</b>

**MOUNTING INSTRUCTIONS:**

*Before permanently mounting the 6220 module, make sure that the supplied adapter harness will reach from the module connector to the relay block. Allow enough slack so that there is not any tension on either end of the harness.*

The model 6220 is designed to be mounted on a horizontal or vertical surface that will allow sufficient airflow over the heat sink on the unit (approximately 1-2 inches of clearance). This will ensure maximum cooling effectiveness under heavy load conditions. The module may be mounted using the two mounting holes on the ends of the module.

It is recommended that the module NOT be mounted with the aluminum heat sink facing up. In the event of water spray or condensation, moisture may collect within the unit and cause erratic operation.

As an alternate mounting method, two plastic tie-wraps are supplied to allow mounting to an existing member or a wire harness within the vehicle. When using this mounting method, it is recommended that the module be allowed sufficient clearance for the heat sink. It is also recommended that the module NOT be mounted with the heat sink facing up.

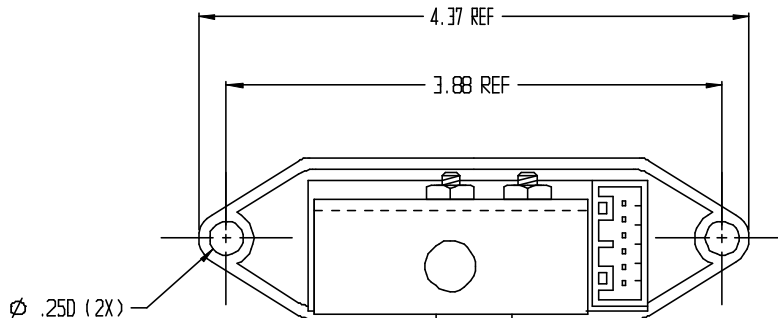
**CONNECTIONS:**

Once the 6220 module is mounted securely, the adapter harness can be connected to the module and relay block. Plug the small end of the harness into the white connector on the module. This connector is polarized and will only fit properly in one orientation. It will be fully engaged when you feel or hear a "click" as the connector locks in place. Plug the large black end of the harness into the block where the relay to be replaced was. This plug is polarized and will only fit properly in one orientation. Note the orientation of the old relay for reference.

After the module is mounted and the harness is connected, connect the ring terminal on the black wire of the harness to a suitable chassis ground point. Ensure that this connection point is free of rust and paint, and a solid connection can be made through a bolt or screw.

Test the HIGH/LOW beam functions on the vehicle for proper operation.

Module Mounting Dimensions



J.W. Speaker Corporation • Germantown, WI U.S.A. • [www.jwspeaker.com](http://www.jwspeaker.com) • [speaker@jwspeaker.com](mailto:speaker@jwspeaker.com) • 262.251.6660