

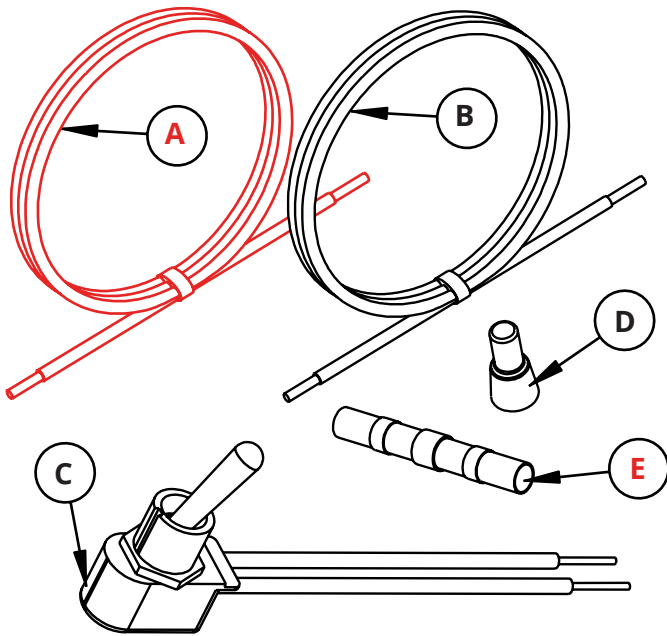
INSTALLATION INSTRUCTIONS

⚠ WARNING

To properly install this light you should have a good understanding of electrical procedures and systems. **IF YOU DO NOT, PLEASE SEEK PROFESSIONAL ASSISTANCE.**

BEFORE INSTALLATION:

Estimated Time:	Less than 30 minutes
Tools Needed:	Crimper tool Heat gun
Wire Functions: (From Lamp)	White = Ground Red = Power/High Intensity Brown = Low Intensity (to be capped)
In the Box:	A (x1) Red wire, 65 feet long B (x1) Black wire, 5 feet long C (x1) Switch D (x4) End Splice Caps E (x2) Solder Splices



PRODUCT WARRANTY:

If you have issues with a J.W. Speaker product, please contact the authorized retailer where you purchased it.

PRE-INSTALLATION INSTRUCTIONS:

1. Read all safety notes and mounting guidelines before installing the product. Verify that all parts listed under "In the Box" are present and complete.
2. Inspect the product for damage. DO NOT install the product if there is any damage. Contact the authorized retailer where you purchased it to initiate a warranty claim if there is damage.
3. Verify that all power supply and/or charging systems comply to the specified voltage limits for the light.

INSTALLATION INSTRUCTIONS:

A FULL WIRING DIAGRAM IS PROVIDED ON PAGE 2.

BROWN LAMP CORD WIRE:

1. Crimp End Splice Cap (**D**) to the end of the brown lamp cord wire. This wire will not be used to power the TS1000 light.

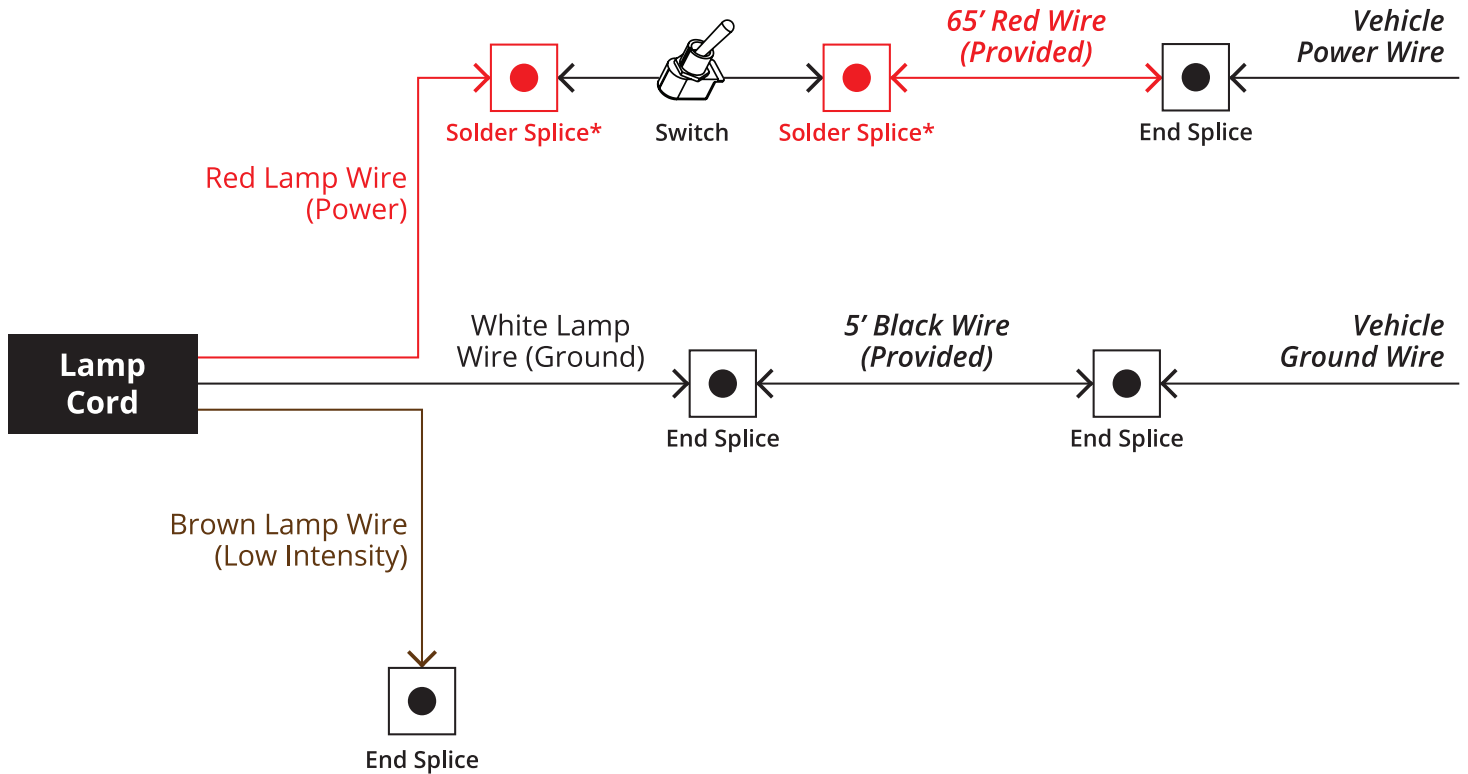
WHITE LAMP CORD WIRE:

1. Crimp End Splice Cap (**D**) to the end of the white lamp cord wire with the provided black 5 foot wire (**B**).
2. Crimp End Splice Cap (**D**) to the end of the provided black 5 foot wire (**B**) with the vehicle ground wire.

RED LAMP CORD WIRE:

1. Crimp Solder Splice (**E**) to the end of the red lamp cord wire. Insert a black wire from the Switch (**C**) at the other side of the Solder Splice. Using the heat gun*, heat the center of the Solder Splice until you observe that the solder has completely melted around the wires.
2. Crimp Solder Splice (**E**) at the end of the other black wire on the Switch (**C**). Insert the provided red 65 foot wire (**A**) into the other side of the Solder Splice. Using the heat gun*, heat the center of the Solder Splice until you observe that the solder has completely melted around the wires.
3. Crimp End Splice Cap (**D**) to the end of the provided 65 foot red wire (**A**) with the vehicle's power wire.

WIRING DIAGRAM



*Be careful while using the heat gun on the Solder Splices to avoid causing damage to any surrounding materials or causing personal injury.