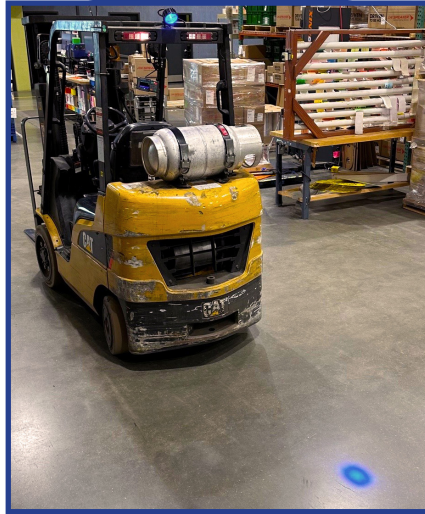


BLUE SPOT



RED SPOT



# MODEL 77

## BLUE & RED SPOT WARNING LIGHT

### Smarter, Brighter, Safer

The new Model 77 Blue and Model 77 Red from J.W. Speaker set a higher standard for material handling safety. Building on the success of our Model 770 BLU and 770 RED, these next-generation warning lights deliver improved performance, a simplified design, that is compact, lighter and offers more connector options. All without compromising safety.

By delivering a clear, unmistakable visual warning, these lights not only protect pedestrians but also give operators the confidence to work efficiently in busy environments.



**J.W. SPEAKER**  
Engineered. Lighting. Solutions.

Model 77 Blue & Red are available at your authorized J.W. Speaker dealer.  
For more information & technical specifications, go to [www.jwspeaker.com](http://www.jwspeaker.com)

# MODEL 77

## BLUE & RED

## SAFETY BY DESIGN

Forklifts are essential, but also one of the leading causes of workplace accidents. Red and blue safety lighting addresses blind spots and noisy conditions by giving pedestrians a clear visual warning before a forklift arrives

### Performance You Can Trust

Color choice enhances effectiveness. Blue light offers excellent visibility in bright or dim conditions, making it ideal for general warning zones. Red light reinforces danger and "stop" cues, making it perfect for intersections, walkways, and high-traffic areas. With both options, safety managers can select the most effective solution for their environment.

Engineered for durability, the Model 77 features rugged polycarbonate construction and an IP69K and IP67-rated housing that stands up to dust, debris, and high-pressure wash downs. The LEDs resist shock and vibration for long-lasting reliability, while the compact, low-profile design fits tight mounting spaces. The universal bracket simplifies installation on front or rear equipment, and the wide voltage range with low current draw ensures compatibility across forklifts and material handling vehicles.

Purpose-built for forklifts and material handling equipment, the Model 77 series is a proven way to reduce risk, improve awareness, and keep workers safe.

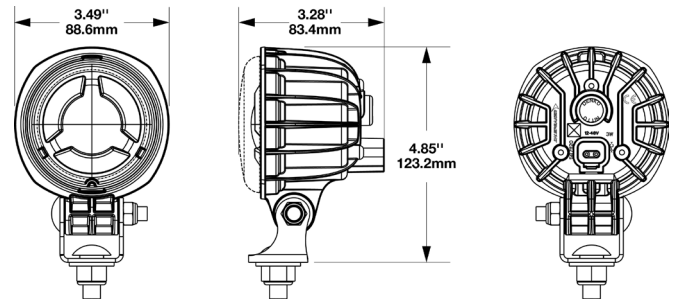


### Key Specifications:

- Projects a Blue or Red Spot for Maximum Visibility
- Chose Between a Deutsch or AMP Connector
- IP69K & IP67 Ratings Protect Against Dust and High-pressure Water
- Universal Mounting Bracket for Easy Install
- Low-profile, Compact Design

### Model 77 LED Material Handling Warning & Safety Lights

Part No.	Color	Description
0647501	Red	12-48V LED Safety Light with Deutsch Connector
0647511	Red	12-48V LED Safety Light with AMP Connector
0647411	Blue	12-48V LED Safety Light with Deutsch Connector
0647421	Blue	12-48V LED Safety Light with AMP Connector



⚠ **WARNING: Cancer and Reproductive Harm - [www.P65Warnings.ca.gov](http://www.P65Warnings.ca.gov)**  
 ⚠ **AVERTISSEMENT: Cancer et effet nocif sur la reproduction - [www.P65Warnings.ca.gov](http://www.P65Warnings.ca.gov)**

### J.W. Speaker Global Headquarters

N120 W19434 Freistadt Road  
 PO Box 1011, Germantown, Wisconsin 53022 USA  
[speaker@jwspeaker.com](mailto:speaker@jwspeaker.com)

