

INSTALLATION INSTRUCTIONS

⚠ WARNING

To properly install this warning light you should have a good understanding of automotive electrical procedures and systems, and proficiency in the installation of warning lights. **IF YOU DO NOT, PLEASE SEEK PROFESSIONAL ASSISTANCE.**

BEFORE INSTALLATION:

- Estimated Time:** 30 Minutes
- Tools Needed:** Wrench
- Wire Functions:**
 Yellow = Steady On
 White = Flash
 Black = Ground

- In the Box:**
1. (x1) Model 529 LED Warning Light
 2. (x1) Mounting Bracket
 3. (x1) Wire Harness
 4. (x1) 1/2" x 1.75" Mounting Bolt
 5. (x1) 5/16" Flat Washer
 6. (x1) Lock Hex Nut
 7. (x2) 8mm Mounting Bolts
 8. (x2) 5/8" Flat Washers
 9. (x2) Split Lock Washers
 10. (x2) 8mm Hex Nuts
 11. (x4) .25" Hex Nuts
 12. (x4) .25" Bolts

Input Voltage: 12-24V DC

Operating Voltage: 9-33V DC

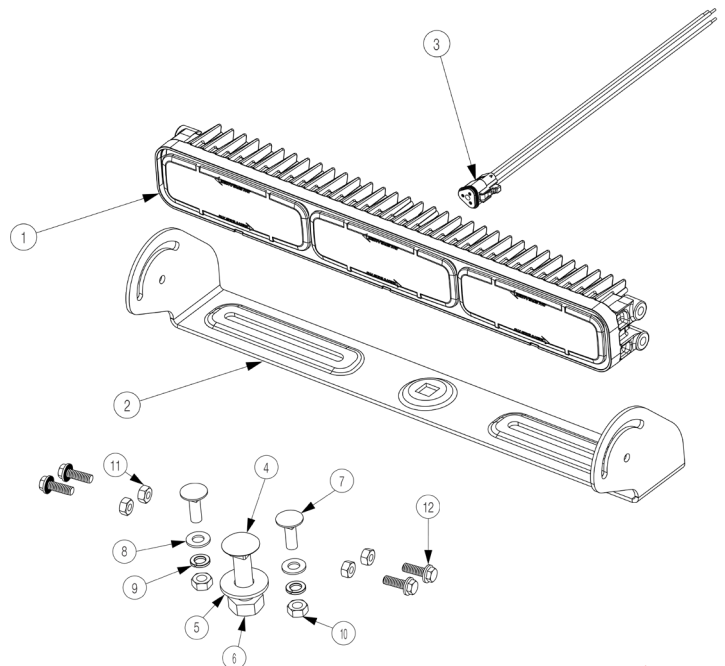
PRE-INSTALLATION INSTRUCTIONS:

1. Read all safety notes and mounting guidelines before installing the product. Verify that all parts listed under "In the Box" are present and complete.
2. Inspect the product for damage. DO NOT install the product if there is any damage. Contact the authorized retailer where you purchased it to initiate a warranty claim if there is damage.
3. Verify that all power supply and/or charging systems comply to the specified voltage limits for the light.

NOTES:

In using this guide, you agree J.W. Speaker is not responsible for any damage, misuse, or personal injuries. This document is intended as an educational guide only and does not make guarantees on any finished results.

To properly install this light you should have a good understanding of automotive electrical procedures and systems, and proficiency in the installation of lights. **IF YOU DO NOT, PLEASE SEEK PROFESSIONAL ASSISTANCE.**



⚠ **WARNING:** Cancer and Reproductive Harm - www.P65Warnings.ca.gov
 ⚠ **AVERTISSEMENT:** Cancer et effet nocif sur la reproduction - www.P65Warnings.ca.gov

PRODUCT WARRANTY:

If you have issues with a J.W. Speaker product, please contact the authorized retailer where you purchased it.

