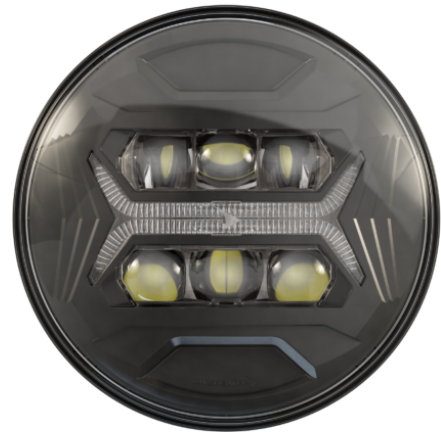


Model 8700 EVO-X Headlight

PRODUCT INFORMATION

Description	12-24V ECE LED LHT 5-in-1 Headlight with Black Bezel
Height	177.20 mm / 6.98 in
Width	177.20 mm / 6.98 in
Depth	84.35 mm / 3.32 in
Shape	Round
Outer Lens Material	Hardcoated Polycarbonate
Outer Lens Color	Clear
Housing Material	Polycarbonate
Housing Color	Black
Bezel Color	Black
Retrofits	2D1 "PAR56" or 7" Round Headlights
Connector or Wiring	integrated 6-pin Deutsch
Mating Connector	Deutsch DT06-6S



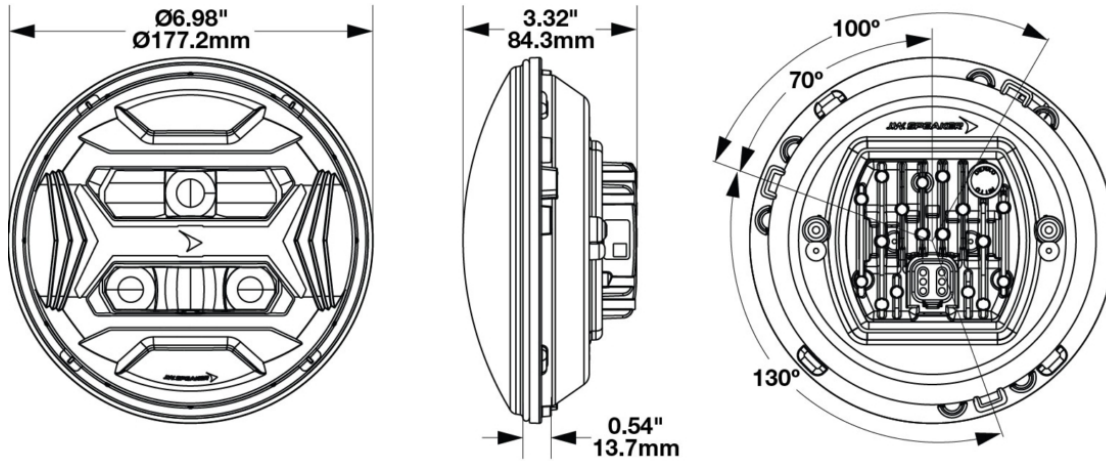
Print date: 2026-04-29

© 2026 J.W. Speaker Corporation • Germantown, WI U.S.A.
www.jwspeaker.com • speaker@jwspeaker.com • 262.251.6660

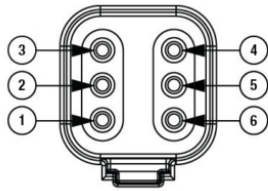
J.W. SPEAKER 
Engineered. Lighting. Solutions.

Model 8700 EVO-X Headlight

PRODUCT DIMENSIONS



View: Back of Lamp
6-Pin Deutsch



PIN	FUNCTION
PIN 1	Front Position
PIN 2	Daytime Running Light
PIN 3	Direction Indicator*
PIN 4	Ground
PIN 5	Low Beam
PIN 6	High Beam

Note: Reference number on Deutsch Connector
*Direction Indicator (DI) is not DOT compliant

Print date: 2026-04-29

© 2026 J.W. Speaker Corporation • Germantown, WI U.S.A.
www.jwspeaker.com • speaker@jwspeaker.com • 262.251.6660

Model 8700 EVO-X Headlight

ELECTRICAL SPECIFICATIONS

Input Voltage	12-24V DC
Operating Voltage	9-32V DC
Current Draw	2.09A @ 12V DC (Low Beam) 1.13A @ 24V DC (Low Beam) 4.52A @ 12V DC (High Beam) 2.21A @ 24V DC (High Beam) 0.26A @ 12V DC (Front Position) 0.15A @ 24V DC (Front Position) 2.52A @ 12V DC (DRL) 1.28A @ 24V DC (DRL) 2.95A @ 12V DC (Direction Indicator) 1.53A @ 24V DC (Direction Indicator)

REGULATORY STANDARDS COMPLIANCE



ECE Reg 10
ECE Reg 148 - A
ECE Reg 149 - C
IEC IP67



ECE Reg 148 - 1b
ECE Reg 148 - RL
ECE Reg 149 - HR
IEC IP69K

Print date: 2026-04-29

© 2026 J.W. Speaker Corporation • Germantown, WI U.S.A.
www.jwspeaker.com • speaker@jwspeaker.com • 262.251.6660

J.W. SPEAKER 
Engineered. Lighting. Solutions.

Model 8700 EVO-X Headlight

PHOTOMETRIC SPECIFICATIONS

Raw Lumen Output	3,740 (High beam), 2,330 (Low Beam)
Effective Lumen Output	1,455 (High Beam), 765 (Low beam)
Candela Output	63,000
Nominal LED Color Temperature	5700 K
Beam Pattern(s)	Forward Lighting - Daytime Running Light Forward Lighting - High Beam (ECE) Forward Lighting - Low Beam (ECE Left Hand) Signalization - Front Position Signalization - Turn (Front)



Print date: 2026-04-29

© 2026 J.W. Speaker Corporation • Germantown, WI U.S.A.
www.jwspeaker.com • speaker@jwspeaker.com • 262.251.6660

Model 8700 EVO-X Headlight

APPLICATIONS



PRODUCT WARNINGS

For California residents:

⚠ **WARNING:** Cancer and reproductive harm - www.P65Warnings.ca.gov.

⚠ **AVERTISSEMENT:** Cancer et effet nocif sur la reproduction - www.P65Warnings.ca.gov.

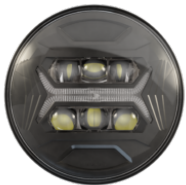
Print date: 2026-04-29

© 2026 J.W. Speaker Corporation • Germantown, WI U.S.A.
www.jwspeaker.com • speaker@jwspeaker.com • 262.251.6660

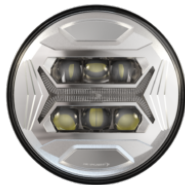
J.W. SPEAKER
Engineered. Lighting. Solutions.

Model 8700 EVO-X Headlight

RELATED PRODUCTS



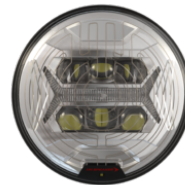
Part Number
0562231
12-24V DOT/ECE LED
RHT 5-in-1 Headlight
with Black Bezel



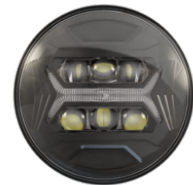
Part Number
0562241
12-24V DOT/ECE LED
RHT 5-in-1 Headlight
with Chrome Bezel



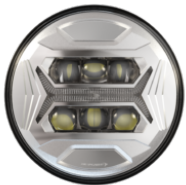
Part Number
0562251
12-24V DOT/ECE LED
RHT 5-in-1 Heated
Headlight with Black
Bezel



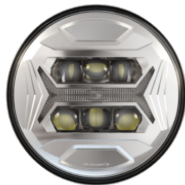
Part Number
0562261
12-24V DOT/ECE LED
RHT 5-in-1 Heated
Headlight with Chrome
Bezel



Part Number
0562271
12-24V DOT/ECE LED
High and Symmetric
Low Beam Headlight
with Front Position
with Black Bezel



Part Number
0562281
12-24V DOT/ECE LED
High and Symmetric
Low Beam Headlight
with Front Position
with Chrome Bezel



Part Number
0562301
12-24V ECE LED LHT
5-in-1 Headlight with
Chrome Bezel



Part Number
0562331
12-24V DOT LED RHT
High and Low Beam
Headlight with Black
Bezel