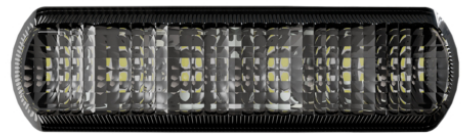


LED Front Position & Signal Lights – Model 215

PRODUCT INFORMATION

Description	12V ECE/SAE LED Front Position & Direction Indicator Light (BULK)
Height	40.00 mm / 1.57 in
Width	128.00 mm / 5.04 in
Depth	25.50 mm / 1 in
Shape	Rectangular
Outer Lens Material	PMMA
Outer Lens Color	CLEAR
Housing Material	Polycarbonate
Housing Color	BLACK
Bezel Color	N/A
Mounting Hardware Description	(x2) Self Threading Nut, 7/16" or 11mm
Mounting Type	Flush
Minimum Operating Temperature	-40 °C / -40 °F
Maximum Operating Temperature	85 °C / 185 °F
Mating Connector	DEUTSCH DT06-3S-P012 (3 PIN)
Product Weight	0.18 lbs / 0.08 kgs
Shipping Weight	7.20 lbs / 3.27 kgs



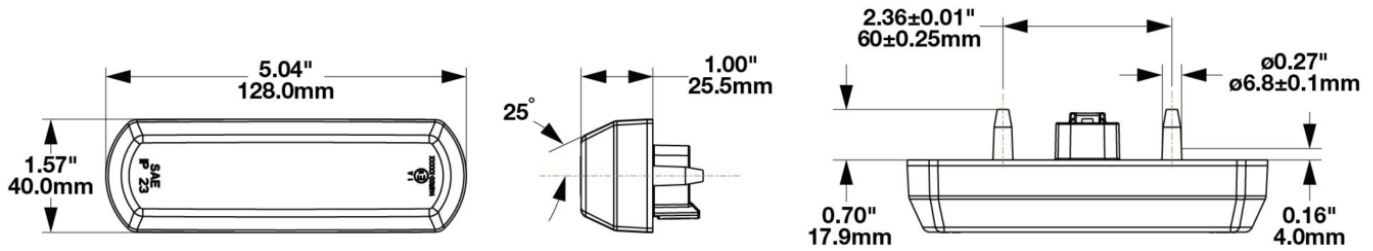
Print date: 2026-04-29

© 2026 J.W. Speaker Corporation • Germantown, WI U.S.A.
www.jwspeaker.com • speaker@jwspeaker.com • 262.251.6660

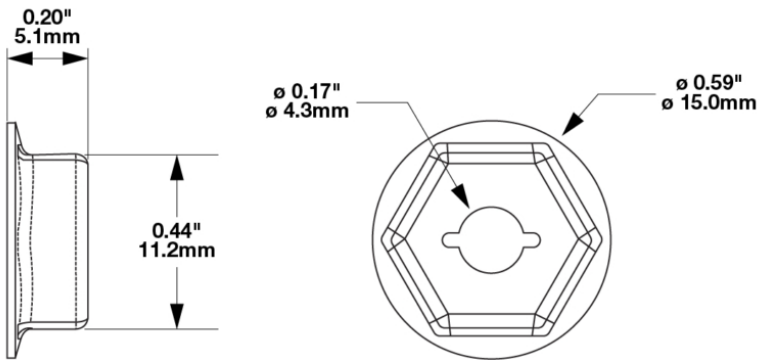
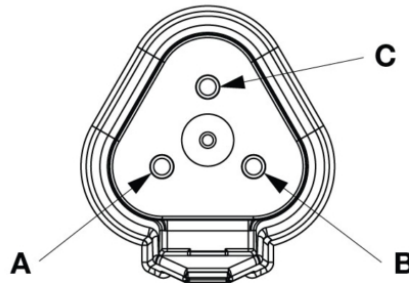
J.W. SPEAKER 
Engineered. Lighting. Solutions.

LED Front Position & Signal Lights - Model 215

PRODUCT DIMENSIONS



PIN	FUNCTION
PIN A	DIRECTIONAL INDICATOR
PIN B	FRONT POSITION
PIN C	GROUND



5430452
(Not Included)

Print date: 2026-04-29

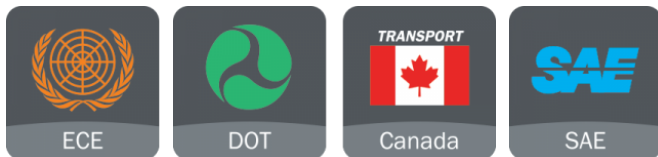
© 2026 J.W. Speaker Corporation • Germantown, WI U.S.A.
www.jwspeaker.com • speaker@jwspeaker.com • 262.251.6660

LED Front Position & Signal Lights – Model 215

ELECTRICAL SPECIFICATIONS

Input Voltage	12V DC
Operating Voltage	9-16V DC
White Wire	Front Position
Yellow Wire	Turn
Black Wire	Ground
Current Draw	0.02A @ 12V DC (Front Position) 0.10A @ 12V DC (Turn)

REGULATORY STANDARDS COMPLIANCE

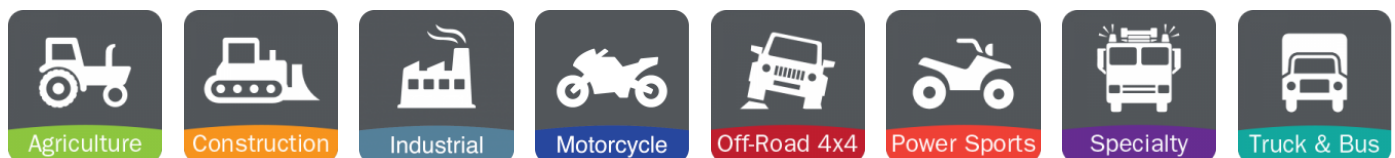


ECE Reg 148 - 1a	ECE Reg 148 - A
FMVSS 108 s7.1 (Table VI)	FMVSS 108 s7.8 (Table XIV)
ISO 13207-1	SAE J222
SAE J588	

PHOTOMETRIC SPECIFICATIONS

Beam Pattern(s)	Signalization - Front Position Signalization - Turn (Front) Warning - Flashing Warning
------------------------	--

APPLICATIONS



Print date: 2026-04-29

© 2026 J.W. Speaker Corporation • Germantown, WI U.S.A.
www.jwspeaker.com • speaker@jwspeaker.com • 262.251.6660

J.W. SPEAKER
Engineered. Lighting. Solutions.

LED Front Position & Signal Lights – Model 215

PRODUCT WARNINGS

For California residents:

⚠ **WARNING:** Cancer and reproductive harm - www.P65Warnings.ca.gov.

⚠ **AVERTISSEMENT:** Cancer et effet nocif sur la reproduction - www.P65Warnings.ca.gov.

ACCESSORIES



Part Number

3270601

Wire Harness, 12"
18GA w/ DT06-3S

Print date: 2026-04-29

© 2026 J.W. Speaker Corporation • Germantown, WI U.S.A.
www.jwspeaker.com • speaker@jwspeaker.com • 262.251.6660

LED Front Position & Signal Lights - Model 215

RELATED PRODUCTS



Part Number
0348251
12V ECE/SAE LED
Front Position &
Direction Indicator
Light



Part Number
0348451
24V ECE LED Front
Position & Direction
Indicator Light



Part Number
0348452
24V ECE LED Front
Position & Direction
Indicator Light (BULK)



Part Number
0348723
12V SAE LED Stop, Tail
& Turn Light - 2 Light
Kit



Part Number
0348733
12V ECE/SAE LED
Direction Indicator - 2
Light Kit



Part Number
0348743
12V ECE LED Stop,
Tail, & Turn - 2 Light
Kit