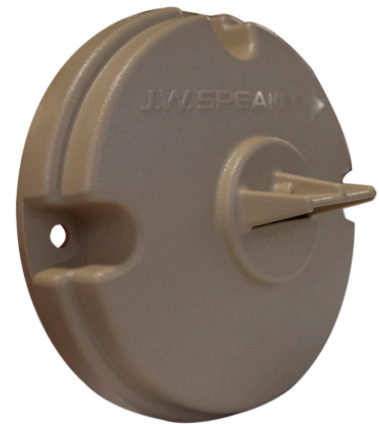


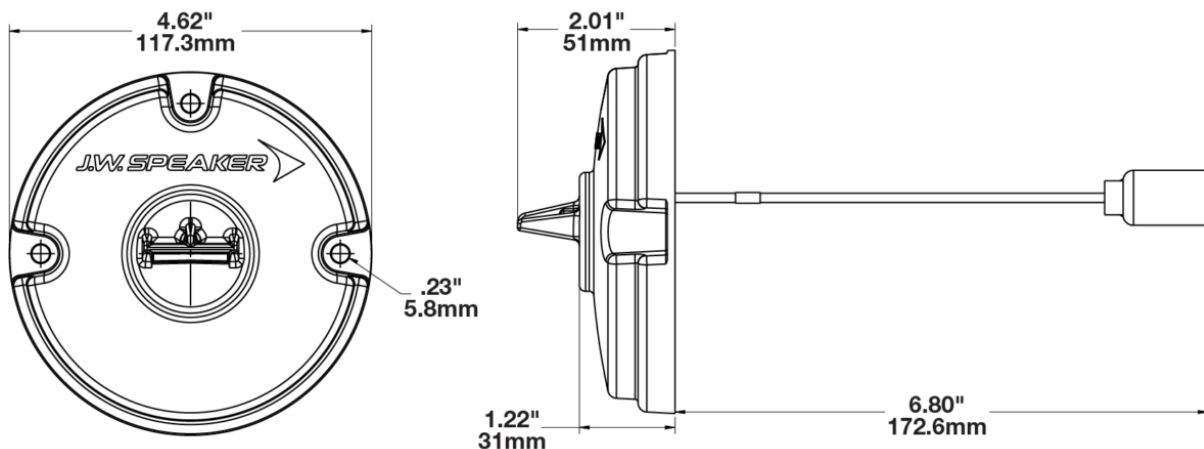
LED Signal Lights – Military Black Out Lights

PRODUCT INFORMATION

Description	12-24V 117mm Cyan Blackout Driving Light with Tan Housing - Bulk Qty (24 MIN)
Height	117.30 mm / 4.62 in
Width	117.30 mm / 4.62 in
Depth	51.00 mm / 2.01 in
Shape	Round
Housing Material	Polycarbonate
Housing Color	Tan
Mounting Type	Surface Mount
Product Weight	0.00 lbs / 0 kgs



PRODUCT DIMENSIONS



Print date: 2018-09-24

© 2018 J.W. Speaker Corporation • Germantown, WI U.S.A.
www.jwspeaker.com • speaker@jwspeaker.com • 262.251.6660

J.W. SPEAKER®
 Engineered. Lighting. Solutions.

LED Signal Lights – Military Black Out Lights

ELECTRICAL SPECIFICATIONS

Input Voltage	12-24V DC
Operating Voltage	10-30V DC
Current Draw	.098A @ 12V DC .057A @ 24V DC

PHOTOMETRIC SPECIFICATIONS

Beam Pattern(s)	Signalization - Marker
------------------------	------------------------

APPLICATIONS



Print date: 2018-09-24

© 2018 J.W. Speaker Corporation • Germantown, WI U.S.A.
www.jwspeaker.com • speaker@jwspeaker.com • 262.251.6660

LED Signal Lights – Military Black Out Lights

RELATED PRODUCTS



Part Number
0347502
24V 60mm Amber
Front Blackout Marker
Light - Bulk Qty (18
MIN)



Part Number
0347512
24V 60mm Red Rear
Blackout Tail Light -
Bulk Qty (18 MIN)



Part Number
0347522
24V 60mm Amber
Rear Blackout Stop
Light - Bulk Qty (18
MIN)



Part Number
0550312
24V 60mm Cyan LH
Blackout Driving Light -
Bulk Qty (18 MIN)



Part Number
0550732
24V 60mm Cyan RH
Blackout Driving Light -
Bulk Qty (18 MIN)



Part Number
0556142
12-24V 117mm Cyan
Blackout Driving Light
with Green Housing -
Bulk Qty (24 MIN)