

LED Signal Lights – Military Blackout Lights

PRODUCT INFORMATION

| | |
|--------------------------------------|--|
| Description | 24V 40mm Cyan LH Blackout Driving Light - Bulk Qty (18 MIN) |
| Height | 39.88 mm / 1.57 in |
| Width | 59.94 mm / 2.36 in |
| Depth | 47.24 mm / 1.86 in |
| Shape | Round |
| Outer Lens Material | Polycarbonate |
| Outer Lens Color | Clear |
| Housing Material | Nylon |
| Housing Color | Black |
| Mounting Hardware Description | (x2) #6-Screw |
| Mounting Type | Flange Mount |
| Minimum Operating Temperature | -40 °C / -40 °F |
| Maximum Operating Temperature | 85 °C / 185 °F |
| Connector or Wiring | Deutsch DT04-2P |
| Mating Connector | Deutsch DT06-2S |
| Product Weight | 0.13 lbs / 0.06 kgs |
| Shipping Weight | 2.97 lbs / 1.35 kgs |
| Additional Information | Light color is Cyan. Meets MIL-PRF-32212A Section 3.4 and 3.5. |



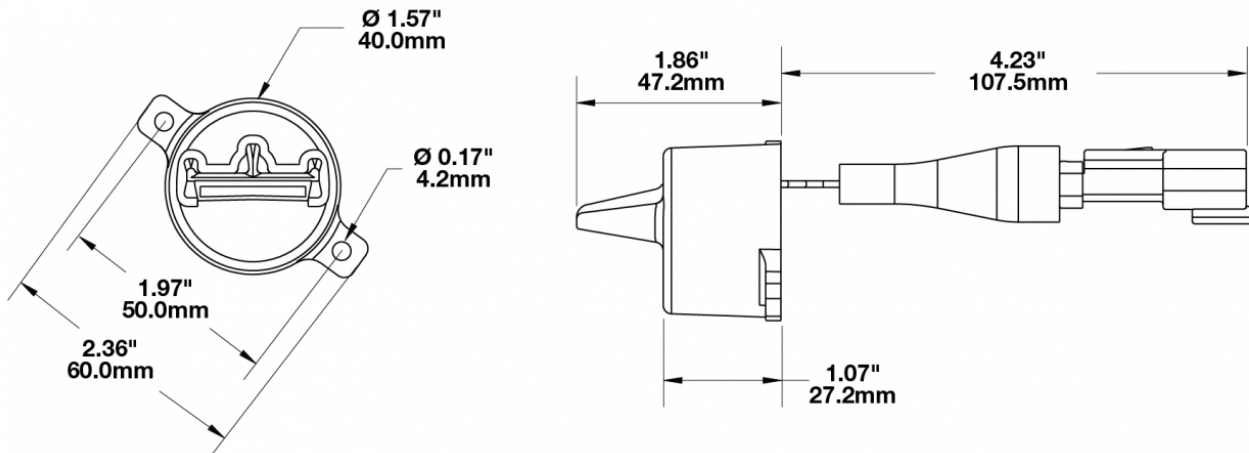
Print date: 2026-01-05

© 2026 J.W. Speaker Corporation • Germantown, WI U.S.A.
www.jwspeaker.com • speaker@jwspeaker.com • 262.251.6660

J.W. SPEAKER®
Engineered. Lighting. Solutions.

LED Signal Lights – Military Blackout Lights

PRODUCT DIMENSIONS



ELECTRICAL SPECIFICATIONS

| | |
|--------------------------|-----------------|
| Input Voltage | 24V DC |
| Operating Voltage | 18-32V DC |
| Black Wire | Ground |
| Red Wire | Power |
| Current Draw | 0.150A @ 24V DC |

REGULATORY STANDARDS COMPLIANCE



Buy America Standards
IEC IP67

Eco Friendly

PHOTOMETRIC SPECIFICATIONS

Beam Pattern(s) Forward Lighting - Driving

Print date: 2026-01-05

© 2026 J.W. Speaker Corporation • Germantown, WI U.S.A.
www.jwspeaker.com • speaker@jwspeaker.com • 262.251.6660

LED Signal Lights – Military Blackout Lights

APPLICATIONS



PRODUCT WARNINGS

For California residents:

⚠ **WARNING:** Cancer and reproductive harm - www.P65Warnings.ca.gov.

⚠ **AVERTISSEMENT:** Cancer et effet nocif sur la reproduction - www.P65Warnings.ca.gov.

RELATED PRODUCTS



Part Number
0347502

24V 40mm Amber
Front Blackout Marker
Light - Bulk Qty (18
MIN)



Part Number
0347512

24V 40mm Red Rear
Blackout Tail Light -
Bulk Qty (18 MIN)



Part Number
0347522

24V 40mm Amber
Rear Blackout Stop
Light - Bulk Qty (18
MIN)



Part Number
0550732

24V 40mm Cyan RH
Blackout Driving Light
- Bulk Qty (18 MIN)



Part Number
0556132

12-24V 117mm Cyan
Blackout Driving Light
with Tan Housing -
Bulk Qty (24 MIN)



Part Number
0556142

12-24V 117mm Cyan
Blackout Driving Light
with Green Housing -
Bulk Qty (24 MIN)

Print date: 2026-01-05

© 2026 J.W. Speaker Corporation • Germantown, WI U.S.A.
www.jwspeaker.com • speaker@jwspeaker.com • 262.251.6660

J.W. SPEAKER®
Engineered. Lighting. Solutions.