

# LED Tail Lights - Model 234

## PRODUCT INFORMATION

<b>Description</b>	12-24V ECE DOT Stop Tail Turn Lamp
<b>Height</b>	110.00 mm / 4.33 in
<b>Width</b>	110.00 mm / 4.33 in
<b>Depth</b>	40.00 mm / 1.57 in
<b>Shape</b>	Round
<b>Outer Lens Material</b>	Polycarbonate
<b>Outer Lens Color</b>	Clear
<b>Housing Material</b>	Polycarbonate
<b>Housing Color</b>	Black
<b>Bezel Color</b>	Red
<b>Mounting Hardware Description</b>	None
<b>Retrofits</b>	Yes
<b>Minimum Operating Temperature</b>	-40 °C / -40 °F
<b>Maximum Operating Temperature</b>	65 °C / 149 °F
<b>Connector or Wiring</b>	Connector
<b>Mating Connector</b>	TE Connectivity SuperSeal 282087-1 OR Aptiv 12110293
<b>Product Weight</b>	0.31 lbs / 0.14 kgs
<b>Shipping Weight</b>	1.14 lbs / 0.52 kgs



**Print date: 2026-04-19**

© 2026 J.W. Speaker Corporation • Germantown, WI U.S.A.  
www.jwspeaker.com • speaker@jwspeaker.com • 262.251.6660

**J.W. SPEAKER**   
Engineered. Lighting. Solutions.

# LED Tail Lights - Model 234

## PRODUCT DIMENSIONS



## ELECTRICAL SPECIFICATIONS

<b>Input Voltage</b>	12-24V AC
<b>Operating Voltage</b>	9-32V AC
<b>White Wire</b>	Ground
<b>Black Wire</b>	Tail
<b>Red Wire</b>	Stop / Turn
<b>Current Draw</b>	0.076A @ 12V AC (Tail) 0.051A @ 24V AC (Tail) 0.238A @ 12V AC (Turn/Stop) 0.134A @ 24V AC (Turn/Stop)

Print date: 2026-04-19

© 2026 J.W. Speaker Corporation • Germantown, WI U.S.A.  
www.jwspeaker.com • speaker@jwspeaker.com • 262.251.6660

# LED Tail Lights - Model 234

## REGULATORY STANDARDS COMPLIANCE

---



ECE Reg 10  
ECE Reg 148 - S1 & R1  
FMVSS CRF 49 571.108 see IEC 60529 IP69K  
drawing  
SAE J2261 & J585

## PHOTOMETRIC SPECIFICATIONS

---

**Nominal LED Color Temperature** 5700 K  
**Beam Pattern(s)** Signalization - Stop  
Signalization - Tail  
Signalization - Turn (Front)  
Signalization - Turn (Rear)

## PRODUCT WARNINGS

---

For California residents:

**⚠ WARNING:** Cancer and reproductive harm - [www.P65Warnings.ca.gov](http://www.P65Warnings.ca.gov).

**⚠ AVERTISSEMENT:** Cancer et effet nocif sur la reproduction - [www.P65Warnings.ca.gov](http://www.P65Warnings.ca.gov).

---

**Print date: 2026-04-19**

© 2026 J.W. Speaker Corporation • Germantown, WI U.S.A.  
[www.jwspeaker.com](http://www.jwspeaker.com) • [speaker@jwspeaker.com](mailto:speaker@jwspeaker.com) • 262.251.6660

**J.W. SPEAKER**   
*Engineered. Lighting. Solutions.*

# LED Tail Lights - Model 234

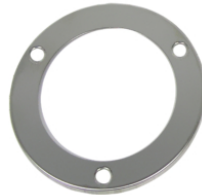
## ACCESSORIES



**Part Number**  
**4242731**  
4" Round Rubber  
Mounting Grommet for  
Model 234



**Part Number**  
**5869401**  
4" Round Plastic  
Mounting Flange for  
Model 234



**Part Number**  
**8200441**  
4" Round Stainless  
Steel Trim Ring for  
Model 234



**Part Number**  
**8200451**  
4" Round Chrome  
Plastic Trim Ring for  
Model 234



**Part Number**  
**3270501**  
3-Pin AMP Connector  
Wire Harness  
Assembly

## RELATED PRODUCTS



**Part Number**  
**0348761**  
12-24V ECE DOT Turn  
Signal Light - with  
Heat



**Part Number**  
**0348771**  
12-24V ECE DOT Turn  
Signal Light



**Part Number**  
**0348781**  
12-24V ECE DOT Stop  
Tail Turn Lamp - with  
Heat



**Part Number**  
**0348801**  
12-24V ECE DOT Stop  
Tail Turn Lamp - Stud  
Mounted - with Heat



**Part Number**  
**0348811**  
12-24V ECE DOT Stop  
Tail Turn Lamp - Stud  
Mounted



**Part Number**  
**0443751**  
12-24V ECE DOT  
Reverse Light - with  
Heat



**Part Number**  
**0443761**  
12-24V ECE DOT  
Reverse Light



**Part Number**  
**0647431**  
12-24V DOT Flashing  
Lamp - Amber - with  
Heat