

# LED Tail Lights - Model 234

## PRODUCT INFORMATION

<b>Description</b>	12-24V ECE DOT Turn Signal Light - with Heat
<b>Height</b>	110.00 mm / 4.33 in
<b>Width</b>	110.00 mm / 4.33 in
<b>Depth</b>	40.00 mm / 1.57 in
<b>Shape</b>	Round
<b>Outer Lens Material</b>	Polycarbonate
<b>Outer Lens Color</b>	Clear
<b>Housing Material</b>	Polycarbonate
<b>Housing Color</b>	Black
<b>Bezel Color</b>	Amber
<b>Mounting Hardware Description</b>	None
<b>Retrofits</b>	Yes
<b>Minimum Operating Temperature</b>	-40 °C / -40 °F
<b>Maximum Operating Temperature</b>	65 °C / 149 °F
<b>Connector or Wiring</b>	Connector
<b>Mating Connector</b>	TE Connectivity SuperSeal 282087-1 OR Aptiv 12110293
<b>Product Weight</b>	0.31 lbs / 0.14 kgs
<b>Shipping Weight</b>	8.58 lbs / 3.89 kgs



**Print date: 2026-06-18**

© 2026 J.W. Speaker Corporation • Germantown, WI U.S.A.  
www.jwspeaker.com • speaker@jwspeaker.com • 262.251.6660

# LED Tail Lights - Model 234

## PRODUCT DIMENSIONS



## ELECTRICAL SPECIFICATIONS

<b>Input Voltage</b>	12-24V AC
<b>Operating Voltage</b>	9-32V AC
<b>White Wire</b>	Ground
<b>Black Wire</b>	Heat
<b>Red Wire</b>	Turn
<b>Current Draw</b>	0.241A @ 12V AC (Turn)
	0.144A @ 24V AC (Turn)
	0.800A @ 12V AC (Heat)
	0.400A @ 24V AC (Heat)
	1.041A @ 12V AC (Turn with Heat)
	0.544A @ 24V AC (Turn with Heat)

Print date: 2026-06-18

© 2026 J.W. Speaker Corporation • Germantown, WI U.S.A.  
 www.jwspeaker.com • speaker@jwspeaker.com • 262.251.6660

# LED Tail Lights - Model 234

## REGULATORY STANDARDS COMPLIANCE



ECE Reg 10  
 FMVSS CFR 49 571.108 see drawing  
 SAE J2261

ECE Reg 148 - 1 & 2a  
 IEC 60529 IP69K

## PHOTOMETRIC SPECIFICATIONS

**Nominal LED Color Temperature** 5700 K

**Beam Pattern(s)** Signalization - Turn (Front)  
 Signalization - Turn (Rear)

## PRODUCT WARNINGS

For California residents:

⚠ **WARNING:** Cancer and reproductive harm - [www.P65Warnings.ca.gov](http://www.P65Warnings.ca.gov).

⚠ **AVERTISSEMENT:** Cancer et effet nocif sur la reproduction - [www.P65Warnings.ca.gov](http://www.P65Warnings.ca.gov).

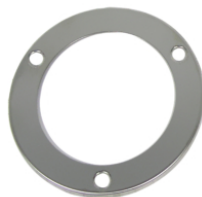
## ACCESSORIES



**Part Number**  
**4242731**  
 4" Round Rubber  
 Mounting Grommet for  
 Model 234



**Part Number**  
**5869401**  
 4" Round Plastic  
 Mounting Flange for  
 Model 234



**Part Number**  
**8200441**  
 4" Round Stainless  
 Steel Trim Ring for  
 Model 234



**Part Number**  
**8200451**  
 4" Round Chrome  
 Plastic Trim Ring for  
 Model 234



**Part Number**  
**3270501**  
 3-Pin AMP Connector  
 Wire Harness  
 Assembly

Print date: 2026-06-18

© 2026 J.W. Speaker Corporation • Germantown, WI U.S.A.  
[www.jwspeaker.com](http://www.jwspeaker.com) • [speaker@jwspeaker.com](mailto:speaker@jwspeaker.com) • 262.251.6660

# LED Tail Lights - Model 234

## RELATED PRODUCTS

---



**Part Number**  
**0348771**  
12-24V ECE DOT Turn  
Signal Light



**Part Number**  
**0348781**  
12-24V ECE DOT Stop  
Tail Turn Lamp - with  
Heat



**Part Number**  
**0348791**  
12-24V ECE DOT Stop  
Tail Turn Lamp



**Part Number**  
**0348801**  
12-24V ECE DOT Stop  
Tail Turn Lamp - Stud  
Mounted - with Heat



**Part Number**  
**0348811**  
12-24V ECE DOT Stop  
Tail Turn Lamp - Stud  
Mounted



**Part Number**  
**0443751**  
12-24V ECE DOT  
Reverse Light - with  
Heat



**Part Number**  
**0443761**  
12-24V ECE DOT  
Reverse Light



**Part Number**  
**0647431**  
12-24V DOT Flashing  
Lamp - Amber - with  
Heat