

LED Tail Lights - Model 234

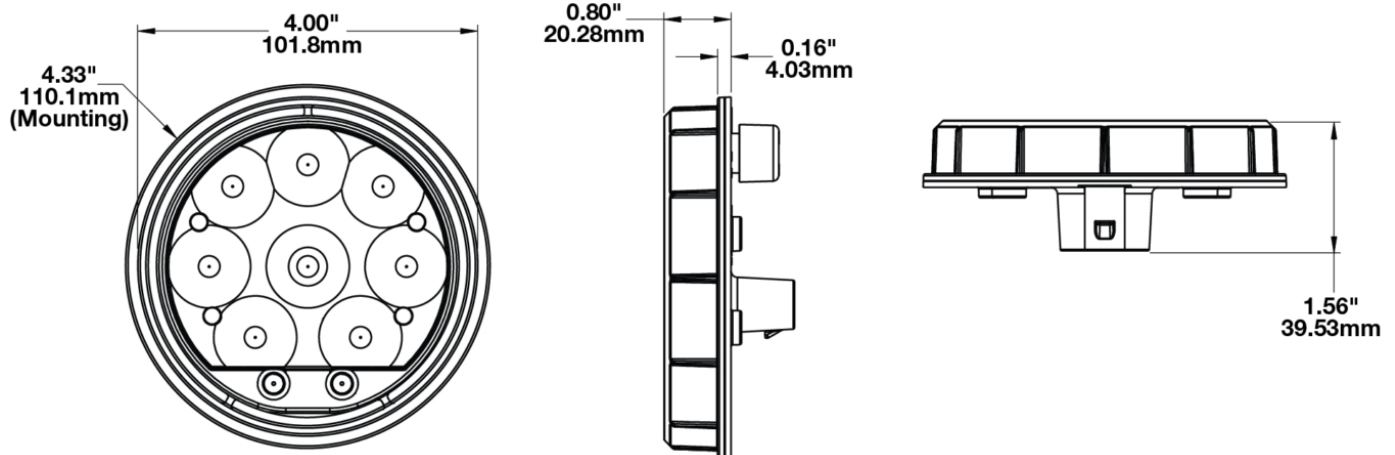
PRODUCT INFORMATION

Description	12-48V DOT LED Non-Heated Stop & Tail Light
Height	20.28 mm / 0.8 in
Width	110.14 mm / 4.34 in
Depth	39.53 mm / 1.56 in
Shape	Round
Outer Lens Material	Polycarbonate
Outer Lens Color	Red
Housing Material	Polycarbonate
Housing Color	Black
Bezel Color	Black
Mounting Type	Grommet
Connector or Wiring	Bare Leads
Mating Connector	None. 3-Pin AMP Connector (#282087-1) sold separately.
Product Weight	0.38 lbs / 0.17 kgs
Shipping Weight	0.55 lbs / 0.25 kgs



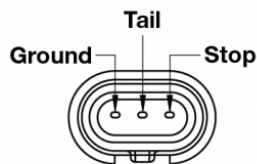
LED Tail Lights - Model 234

PRODUCT DIMENSIONS

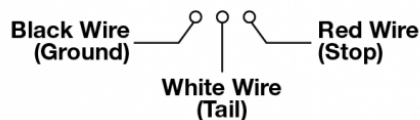


Pin Out Information

LIGHT (Socket shown ↑ top)



WIRE HARNESS



Print date: 2025-09-03

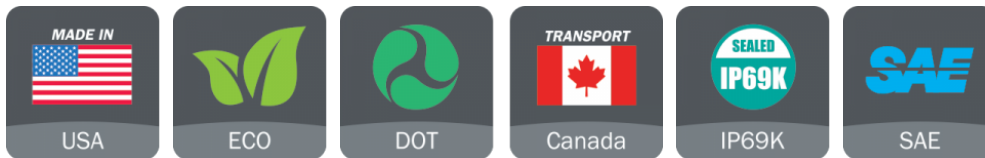
© 2025 J.W. Speaker Corporation • Germantown, WI U.S.A.
www.jwspeaker.com • speaker@jwspeaker.com • 262.251.6660

LED Tail Lights - Model 234

ELECTRICAL SPECIFICATIONS

Input Voltage	12-48V DC
Operating Voltage	10-60V DC
Current Draw	.005A @ 12V DC (Tail) .007A @ 24V DC (Tail) .009A @ 36V DC (Tail) .011A @ 48V DC (Tail) .12A @ 12V DC (Stop) .08A @ 24V DC (Stop) .06A @ 36V DC (Stop) .05A @ 48V DC (Stop)

REGULATORY STANDARDS COMPLIANCE



Buy America Standards	Eco Friendly
FMVSS 108 s7.1 (Table VII)	FMVSS 108 s7.2 (Table VIII)
FMVSS 108 s7.3 (Table IX)	IEC IP69K
SAE J585	SAE J586
SAE J588	

PHOTOMETRIC SPECIFICATIONS

Effective Lumen Output	55
Beam Pattern(s)	Signalization - Stop Signalization - Tail Signalization - Turn (Rear)

Print date: 2025-09-03

© 2025 J.W. Speaker Corporation • Germantown, WI U.S.A.
www.jwspeaker.com • speaker@jwspeaker.com • 262.251.6660

J.W. SPEAKER®
Engineered. Lighting. Solutions.

LED Tail Lights - Model 234

APPLICATIONS



PRODUCT WARNINGS

For California residents:

⚠ **WARNING:** Cancer and reproductive harm - www.P65Warnings.ca.gov.

⚠ **AVERTISSEMENT:** Cancer et effet nocif sur la reproduction - www.P65Warnings.ca.gov.

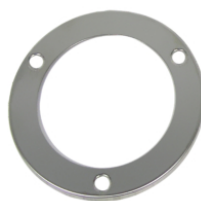
ACCESSORIES



Part Number
4242731
4" Round Rubber
Mounting Grommet for
Model 234



Part Number
5869401
4" Round Plastic
Mounting Flange for
Model 234



Part Number
8200441
4" Round Stainless
Steel Trim Ring for
Model 234



Part Number
8200451
4" Round Chrome
Plastic Trim Ring for
Model 234



Part Number
3270501
3-Pin AMP Connector
Wire Harness
Assembly

Print date: 2025-09-03

© 2025 J.W. Speaker Corporation • Germantown, WI U.S.A.
www.jwspeaker.com • speaker@jwspeaker.com • 262.251.6660

J.W. SPEAKER
Engineered. Lighting. Solutions.

LED Tail Lights - Model 234

RELATED PRODUCTS



Part Number
0346261

12-24V DOT LED
Heated Red Stop, Tail,
& Turn Light



Part Number
0346264

12-24V DOT LED
Heated Red Stop, Tail,
& Turn Light Kit with
Harness



Part Number
0346471

12-24V DOT LED
Heated White Reverse
Light



Part Number
0346474

12-24V DOT LED
Heated White Reverse
Light Kit with Harness



Part Number
0347811

12-24V DOT LED
Heated Amber Turn
Signal



Part Number
0347814

12-24V DOT LED
Heated Amber Turn
Signal Kit with Harness



Part Number
0347861

12-24V DOT LED Non-
Heated Red Stop, Tail,
& Turn Light



Part Number
0347864

12-24V DOT LED Non-
Heated Red Stop, Tail,
& Turn Light Kit with
Harness