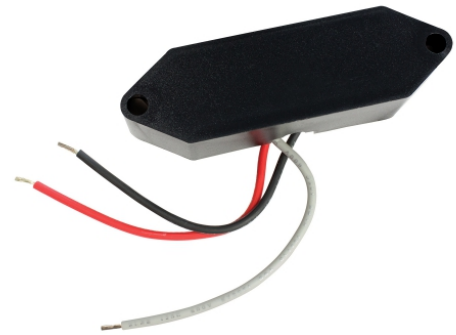


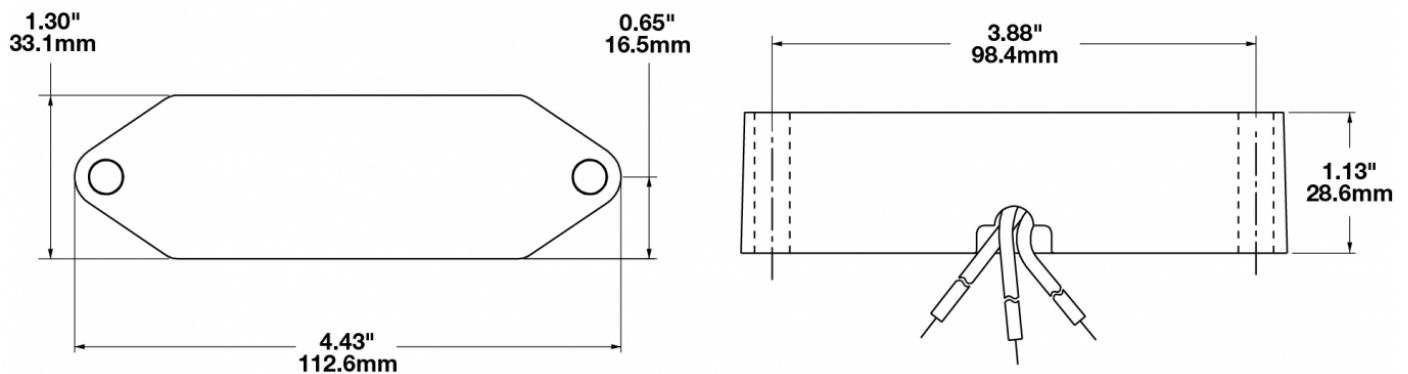
Flasher Control Module - Model 6309

PRODUCT INFORMATION

Description	12-80V Flasher Control Module
Height	28.70 mm / 1.13 in
Width	111.00 mm / 4.37 in
Depth	33.27 mm / 1.31 in
Housing Material	Polycarbonate
Mounting Type	Low Profile Mount
Minimum Operating Temperature	-40 °C / -40 °F
Maximum Operating Temperature	65 °C / 149 °F
Connector or Wiring	9" Bare Leads
Product Weight	0.42 lbs / 0.19 kgs



PRODUCT DIMENSIONS



Print date: 2017-11-23

© 2017 J.W. Speaker Corporation • Germantown, WI U.S.A.
 www.jwspeaker.com • speaker@jwspeaker.com • 262.251.6660

Flasher Control Module - Model 6309

ELECTRICAL SPECIFICATIONS

Input Voltage	12-80V DC
Current Draw	5A @ 12V DC 5A @ 24V DC 5A @ 36V DC 5A @ 48V DC 5.00A @ 60V DC 5.00A @ 80V DC

REGULATORY STANDARDS COMPLIANCE

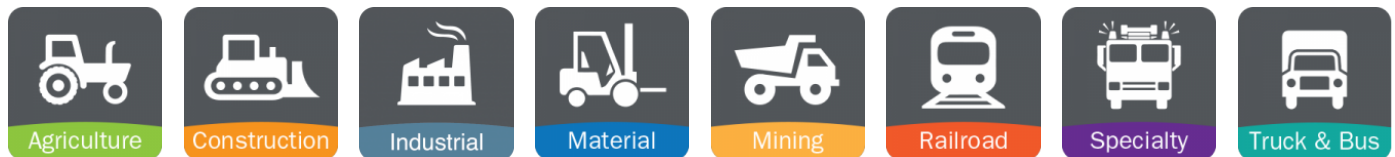


Buy America Standards	IEC IP67
MIL-STD 461	UL Recognized

PHOTOMETRIC SPECIFICATIONS

Flash Rate 1 70 +/- 10 fpm

APPLICATIONS



Print date: 2017-11-23

© 2017 J.W. Speaker Corporation • Germantown, WI U.S.A.
www.jwspeaker.com • speaker@jwspeaker.com • 262.251.6660