

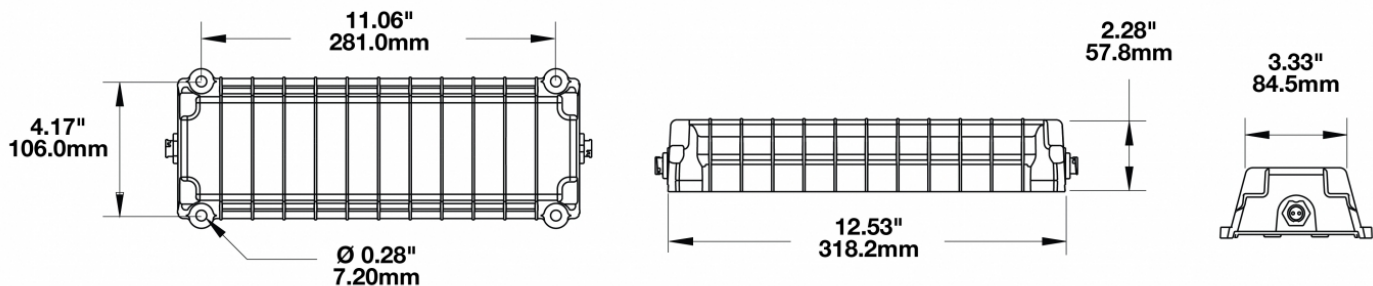
# AC/DC Converter - Model 6406

## PRODUCT INFORMATION

<b>Description</b>	24V 240W AC/DC Converter Box
<b>Height</b>	106.00 mm / 4.17 in
<b>Width</b>	281.00 mm / 11.06 in
<b>Depth</b>	318.72 mm / 12.55 in
<b>Shape</b>	Rectangular
<b>Housing Material</b>	Xenoy
<b>Housing Color</b>	Black
<b>Connector or Wiring</b>	Input & Output Wire Harness Ordered Separately
<b>Product Weight</b>	1.52 lbs / 0.69 kgs
<b>Shipping Weight</b>	3.87 lbs / 1.76 kgs
<b>Additional Information</b>	Input: 100-277 V AC 50/60Hz input Output: 24 V DC Output Current Max: 10 Amp UL recognized, Class 2 power supplies



## PRODUCT DIMENSIONS



Print date: 2026-04-02

© 2026 J.W. Speaker Corporation • Germantown, WI U.S.A.  
www.jwspeaker.com • speaker@jwspeaker.com • 262.251.6660

# AC/DC Converter - Model 6406

## ELECTRICAL SPECIFICATIONS

---

**Input Voltage** 100-277V AC

## REGULATORY STANDARDS COMPLIANCE

---



Eco Friendly  
UL Recognized

IEC IP69K

## APPLICATIONS

---



**Print date: 2026-04-02**

© 2026 J.W. Speaker Corporation • Germantown, WI U.S.A.  
www.jwspeaker.com • speaker@jwspeaker.com • 262.251.6660

# AC/DC Converter - Model 6406

## ORDERING INFORMATION

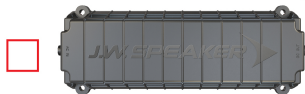
You will need to order 3 parts: a Converter Box, an AC Input Harness, and a DC Output Harness. Follow the steps below:

**Step 1:**  
Select 1 Converter Box

#0842291 - Model 6404 (35W)



#0842301 - Model 6406 (150W)



#0842311 - Model 6406 (240W)



**Step 2:**  
Select 1 AC Input Harness

#3269651 - 3M harness



#3269661 - 10M harness



**Step 3:**  
Select 1 DC Output Harness

#3269241 - 1M harness w/ iCONN connector



#3269671 - 3M harness w/ iCONN connector



#3269681 - 3M harness w/ DC Terminal kit  
Kit Includes: Deutsch, Packard and Butt Slice connector



## PRODUCT WARNINGS

For California residents:

**⚠ WARNING:** Cancer and reproductive harm - [www.P65Warnings.ca.gov](http://www.P65Warnings.ca.gov).

**⚠ AVERTISSEMENT:** Cancer et effet nocif sur la reproduction - [www.P65Warnings.ca.gov](http://www.P65Warnings.ca.gov).

## ACCESSORIES



**Part Number**  
**3269651**

AC Input Harness 3m  
with iCONN Connector



**Part Number**  
**3269661**

AC Input Harness 10m  
with iCONN Connector



**Part Number**  
**3269681**

DC Output Harness 3m  
Bare Leads with DC  
Terminal Kit



**Part Number**  
**3269241**

DC Output Harness 1m  
with iCONN Connector



**Part Number**  
**3269671**

DC Output Harness 3m  
with iCONN Connector

Print date: 2026-04-02

© 2026 J.W. Speaker Corporation • Germantown, WI U.S.A.  
www.jwspeaker.com • speaker@jwspeaker.com • 262.251.6660

# AC/DC Converter - Model 6406

## RELATED PRODUCTS

---



**Part Number**

**0842301**

24V 150W AC/DC  
Converter Box