

Dimensions in inches (mm in parentheses).
Dimensions are for reference only.

Product List

Model Number	Description
890-12/48V	12-48V LED Work Light

Features & Benefits

- 90 Raw Lumens; 50 Effective Lumens
- Available in a 12-48V DC configurations
- Flood, Trapezoid & Wide Trapezoid beam patterns available
- UV-resistant polycarbonate lens
- Rugged solid state LEDs can withstand shock & vibration
- Long-lasting LEDs mean never having to replace another bulb again!
- Tough polycarbonate housing prevents rust & corrosion

General Specifications

Lens Pattern :	Flood, Trapezoid or Wide Trapezoid
Lens Material :	Polycarbonate
Warranty:	4-year Limited Warranty
Housing Material :	Polycarbonate
Mounting :	Low Profile Mount
Connector:	Various options available
Mating Connector:	Various options available

Technical Specifications

890-12/48V
12-48V DC Input
0.230 Amps @ 12V DC
0.100 Amps @ 24V DC
0.080 Amps @ 36V DC
0.070 Amps @ 48V DC
Raw Lumen Output: 90
Effective Lumen Output: 50

Standards Compliance

Sealed to IP67

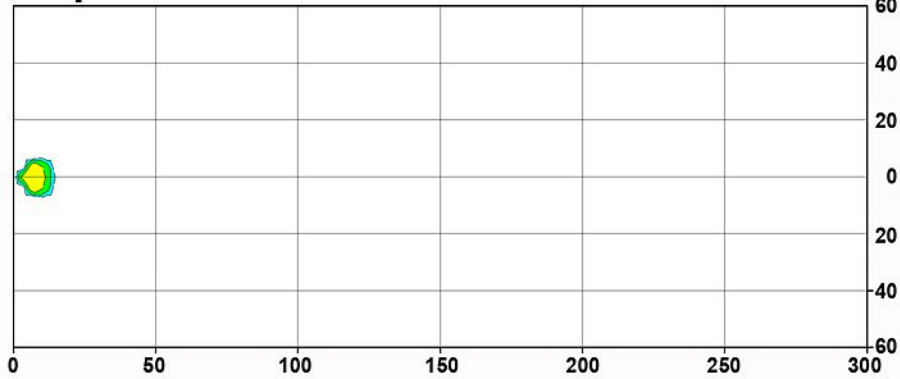
Applications

Agricultural	Aviation	Construction
Fire & Rescue	Forestry	Industrial
Law Enforcement	Lawn & Garden	Marine
Material Handling	Military	Mining
Off-Highway	On-Highway	Recreational
Specialty Trucks	Utility	

Model 890

Trapezoid Pattern (2.5m high, -15°)

2.52 Max.



0.25 0.50 1.0 5.0 10 25 50 Lux