

Dimensions in inches (mm in parentheses).
Dimensions are for reference only.

Product List

Model Number	Description
8200/DS1-12V	12V HID Work Light (DS1-12V Bulb)
8200/DS1-24V	24V HID Work Light (DS1-24V Bulb)

Features & Benefits

- 3,300 Raw Lumens; 2,100 Effective Lumens (Clear Lens); 1,700 Effective Lumens (Amber Lens)
- Available in 12V DC or 24V DC configurations
- Flood & Trapezoid beam patterns available
- Durable glass lens stands up to harsh environmental conditions
- High output HID provides great visibility!
- Durable Xenoy housing
- Hollow fixed stud mount keeps wires secure
- Integrated ballast provides ease of installation & compact placement on the vehicle
- Choose from amber or clear lenses

General Specifications

Lens Pattern :	Flood or Trapezoid
Lens Material :	Glass
Warranty:	1-Year Limited Warranty
Housing Material :	Xenoy
Mounting Hardware:	(x1) 1/2-13 x 1.25 Hollow Mounting Stud
Mounting :	Hollow Stud Mount
Connector:	Integrated 2-Pin Deutsch Weather-Proof Socket (DT04-2P)
Mating Connector:	2-Pin Deutsch Weather-Proof Plug (DT06-2S)

Technical Specifications

12V Version	24V Version
12V DC Input	24V DC Input
3.30 Amps @ 12V DC	1.65 Amps @ 24V DC
Raw Lumen Output: 3300	Raw Lumen Output: 3300
Bulb Replacement: D1S-12V HID Bulb	Bulb Replacement: D1S-24V HID Bulb

Standards Compliance

Sealed to IP67

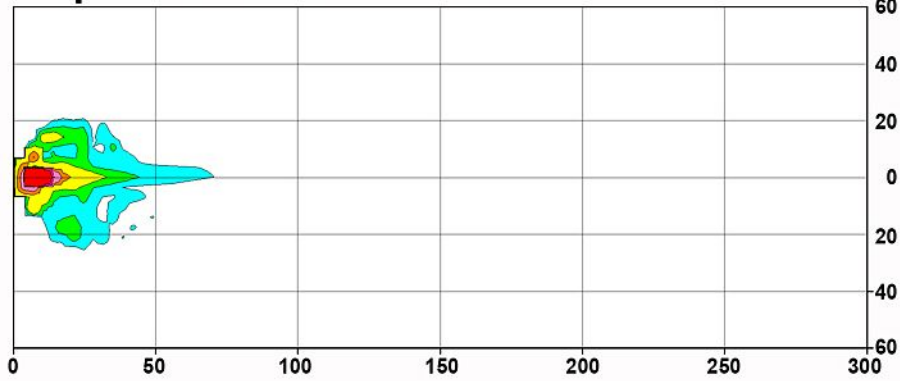
Applications

Agricultural	Construction	Fire & Rescue
Forestry	Industrial	Military
Mining	Off-Highway	Recreational
Specialty Trucks	Utility	

Model 8200

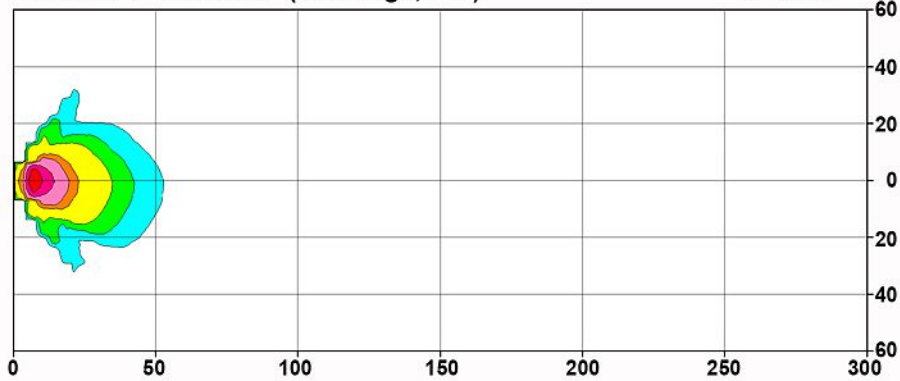
Trapezoid Pattern (2.5m high, -15°)

993 Max.



Flood Pattern (2.5m high, -15°)

91 Max.



0.25 0.50 1.0 5.0 10 25 50 Lux