

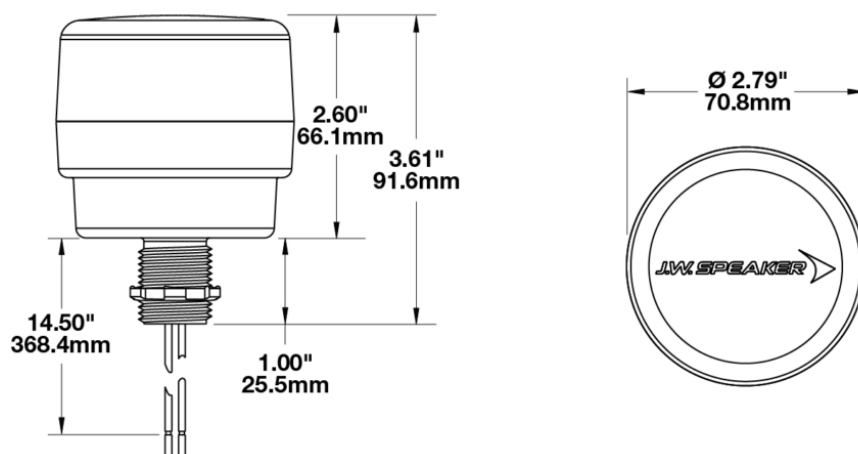
LED Strobe Lights - Model 538

PRODUCT INFORMATION

| | |
|--------------------------------------|---|
| Description | 12-80V Red Class III LED Strobe Light with Pipe Mount |
| Height | 91.60 mm / 3.61 in |
| Width | 70.80 mm / 2.79 in |
| Depth | 70.80 mm / 2.79 in |
| Shape | Round |
| Outer Lens Material | Acrylic |
| Outer Lens Color | Clear |
| Housing Material | Polycarbonate |
| Housing Color | Black |
| Mounting Type | Pipe Mount |
| Minimum Operating Temperature | -40 °C / -40 °F |
| Maximum Operating Temperature | 65 °C / 149 °F |
| Connector or Wiring | 13.5" Bare Leads |
| Product Weight | 0.30 lbs / 0.14 kgs |
| Shipping Weight | 1.51 lbs / 0.68 kgs |



PRODUCT DIMENSIONS



Print date: 2018-02-18

© 2018 J.W. Speaker Corporation • Germantown, WI U.S.A.
www.jwspeaker.com • speaker@jwspeaker.com • 262.251.6660

J.W. SPEAKER 
 Engineered. Lighting. Solutions.

LED Strobe Lights - Model 538

ELECTRICAL SPECIFICATIONS

| | |
|--------------------------|---|
| Input Voltage | 12-80VDCV DC |
| Operating Voltage | 12-80VDCV DC |
| Red Wire | Positive |
| Black Wire | Negative |
| Current Draw | 0.256A @ 12V DC 0.088A @ 48V DC 0.076A @ 80V DC |

REGULATORY STANDARDS COMPLIANCE



Buy America Standards
UL Recognized

Eco Friendly

PHOTOMETRIC SPECIFICATIONS

| | |
|------------------------|------------------|
| Beam Pattern(s) | Warning - Strobe |
| Flash Rate 1 | 60 +/- 10 fpm |

APPLICATIONS



Print date: 2018-02-18

© 2018 J.W. Speaker Corporation • Germantown, WI U.S.A.
www.jwspeaker.com • speaker@jwspeaker.com • 262.251.6660

J.W. SPEAKER
Engineered. Lighting. Solutions.

LED Strobe Lights - Model 538

RELATED PRODUCTS



Part Number
0646391
12-80V Amber Class III
LED Strobe Light with
Pipe Mount



Part Number
0646411
12-80V Green Class III
LED Strobe Light with
Pipe Mount



Part Number
0646421
12-80V Blue Class III
LED Strobe Light with
Pipe Mount



Part Number
0646431
12-80V White Class III
LED Strobe Light with
Pipe Mount