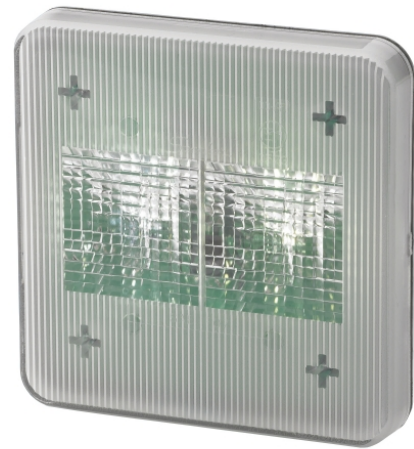


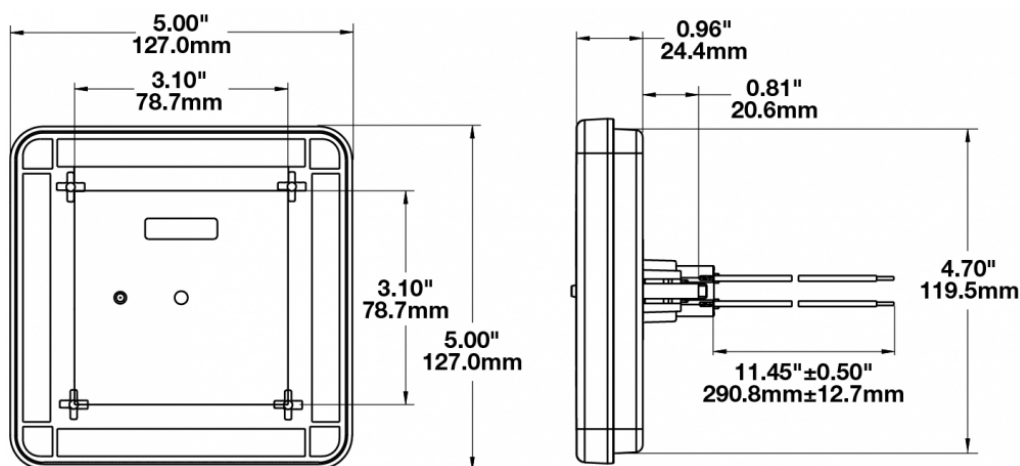
LED Signal Lights - Model 224

PRODUCT INFORMATION

Description	12-24V ECE/SAE LED Backup Light
Height	127.00 mm / 5 in
Width	127.00 mm / 5 in
Depth	44.96 mm / 1.77 in
Shape	Square
Outer Lens Material	Acrylic
Outer Lens Color	Clear
Housing Material	ABS
Housing Color	Black
Mounting Hardware Description	(x2) M6-1 x 25 Mounting Bolts
Mounting Type	Low Profile Mount
Minimum Operating Temperature	-40 °C / -40 °F
Maximum Operating Temperature	65 °C / 149 °F
Mating Connector	4-Pin Deutsch Plug (DT06-4S)
Product Weight	0.46 lbs / 0.21 kgs
Shipping Weight	0.46 lbs / 0.21 kgs



PRODUCT DIMENSIONS



Print date: 2017-12-11

© 2017 J.W. Speaker Corporation • Germantown, WI U.S.A.
 www.jwspeaker.com • speaker@jwspeaker.com • 262.251.6660

LED Signal Lights - Model 224

ELECTRICAL SPECIFICATIONS

Input Voltage	12-24V DC
Black Wire	Ground
White Wire	Backup
Current Draw	0.145A @ 12V DC 0.082A @ 24V DC

REGULATORY STANDARDS COMPLIANCE



ASABE S279	Buy America Standards
ECE Reg 23	Eco Friendly
FMVSS 108 Table XII	IEC IP67
SAE J593	

PHOTOMETRIC SPECIFICATIONS

Nominal LED Color Temperature 5000 K

APPLICATIONS



Print date: 2017-12-11

© 2017 J.W. Speaker Corporation • Germantown, WI U.S.A.
www.jwspeaker.com • speaker@jwspeaker.com • 262.251.6660

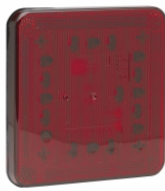
J.W. SPEAKER
Engineered. Lighting. Solutions.

LED Signal Lights - Model 224

RELATED PRODUCTS



Part Number
0342291
12-24V ECE/SAE LED
Turn Signal Light



Part Number
0342301
12-24V ECE/SAE LED
Stop & Tail Light



Part Number
0342361
12-24V LED Rear Fog
Light